

estate agents **auctioneers**

**hollis
morgan**



139 Reedley Road, Stoke Bishop, Bristol, BS9 1BG

£575,000

Hollis Morgan - A BEAUTIFULLY presented THREE bedroom SEMI DETACHED 1930's family home with LARGE SOUTH FACING rear GARDEN. ELMLEA SCHOOL CATCHMENT. GARAGE and Car Port. CHAIN FREE.

- 1930's Semi Detached Family Home
- Three Bedrooms
- South Facing Rear Garden
- Off Street Parking
- Close to Local Shops & Amenities
- No Onward Chain
- Elmlea School Catchment
- Garage

The Property

This attractive 1930's semi detached property is located at the 'quieter' end of this ever popular residential street in Westbury On Trym and only a stones through from a vast range of local independent retailers such as grocery shops, restaurants and cafes. Immaculately presented and recently decorated throughout by the current owners, the property offers plenty of space for a growing family, as well as significant development potential to extend further.

The ground floor is comprised of two reception rooms separated by double doors as well as a traditional bay window to the front.

A recently fitted separate kitchen has been well designed and boasts a huge range of storage in the matching white gloss wall and base units as well window and door to the rear which provides direct access to the garden.

Three bedrooms are upstairs with two generous doubles along with a well appointed four piece family bathroom with large corner shower cubicle with mains fed shower, electric shower over 'Jacuzzi' bath and 'his & hers' sinks.

Externally the property benefits from a sizeable south facing rear garden, summer house, garage, car port and off street parking.

Location

Reedley Road is a desirable residential street in the ever popular Westbury On Trym not far from the local amenities that the village of Westbury On Trym and the High Streets of Druid Hill & Stoke Lane have to offer.

Within a short walking distance are a number of bus routes providing direct access into the centre and Sea Mills train station is just over 1 mile away.

Westbury on Trym is amongst the most sought after locations in the city. Offering a mix of suburban convenience with open green spaces including Durdham Downs and Canford Park, excellent amenities in Westbury Village, Stoke Lane, Whiteladies Road and Henleaze providing a wide range of supermarkets, shops, restaurants and pubs. With a wide range of schools including Elmlea Primary Schools, Stoke Bishop C of E primary, Badminton, Redmaids, St Ursula's Academy and excellent access to the City, Sea Mills Train Stations and the regions motorway network.

Tenure

Freehold

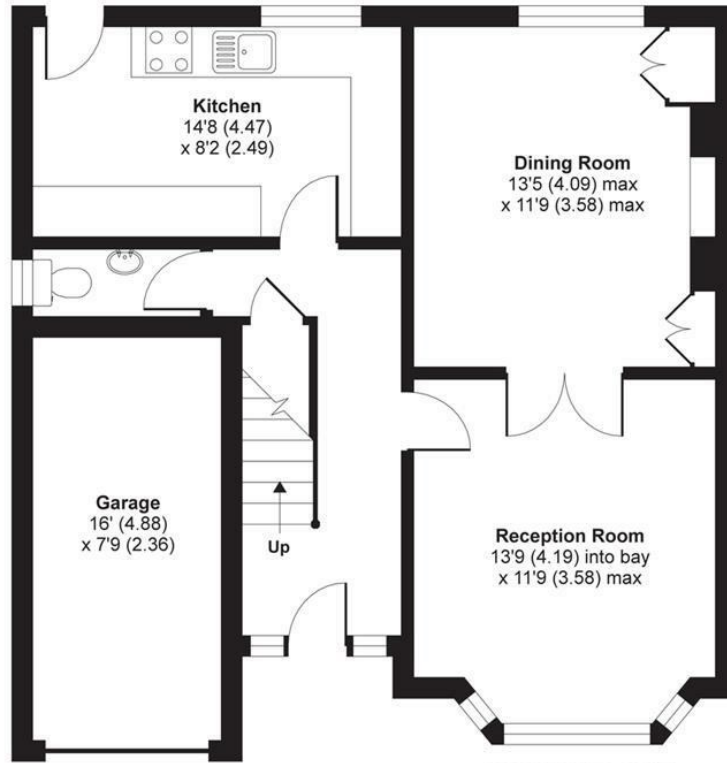
Please Note

We endeavour to make our sales details accurate and reliable but they should not be relied on as statements or representations of fact and they do not constitute any part of an offer or contract. The seller does not make any representation or give any warranty in relation to the property and we have no authority to do so on behalf of the seller.

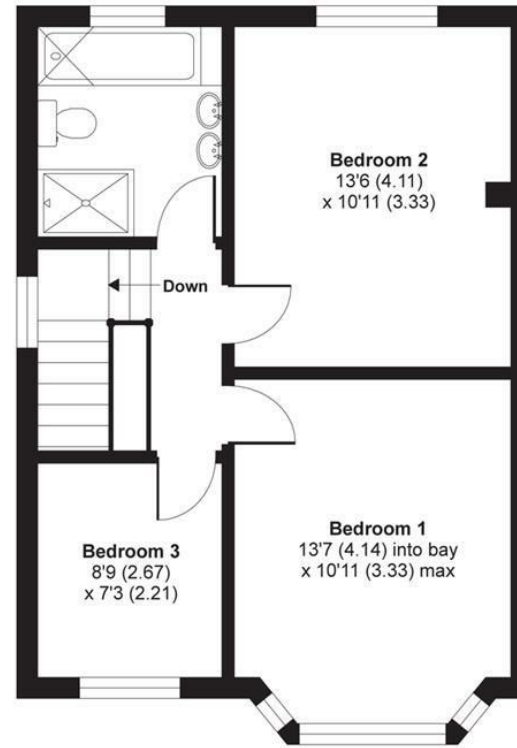


Reedley Road, Westbury - On - Trym, Bristol, BS9

APPROX. GROSS INTERNAL FLOOR AREA 1221 SQ FT 113.4 SQ METRES (INCLUDES GARAGE)



GROUND FLOOR



FIRST FLOOR

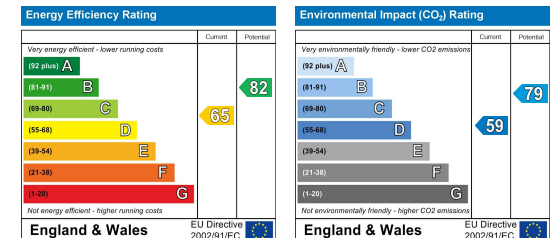
Whilst every attempt has been made to ensure the accuracy of the floor plan contained here, measurements of doors, windows and rooms are approximate and no responsibility is taken for any error, omission or misstatement. These plans are for representation purposes only as defined by RICS Code of Measuring Practice and should be used as such by any prospective purchaser. Specifically no guarantee is given on the total square footage of the property if quoted on this plan. Any figure given is for initial guidance only and should not be relied on as a basis of valuation.

Copyright nichecom.co.uk 2019 Produced for Hollis Morgan REF : 425652

TEL | 0117 933 9522 | 9 Waterloo Street, Clifton, Bristol BS8 4BT

www.hollismorgan.co.uk | post@hollismorgan.co.uk

Hollis Morgan Property Limited, registered in England, registered no 7275716
Registered address, 5 Upper Belgrave Road, Clifton, Bristol BS8 2XQ



hollis
morgan
